

This section gives you all the information necessary to help you monitor and operate your controller including an Operator Interface overview, an explanation of the Displays, keys, LEDs, Mode access, and Operation Modes.

The controller features an 'INTELLIGENT DOL' panel with two red LED displays. The upper display shows '4.15' and the lower display shows 'OFF'. To the right of the displays are three LEDs labeled R, Y, and B. Below the displays are several keys: SET, UP (with an upward arrow), DOWN (with a downward arrow), RST (with a square symbol), and AUTO/MANUAL (with a square symbol). Labels at the bottom identify these as SET key, UP key, DOWN key/RESET key, and AUTO/MANUAL key.

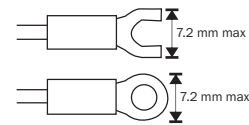
KEY OPERATION:

Keys	Functions
	To View & Edit Parameter And to be set Value And Move To The next Step
	To Increment Parameter Value + Voltage Scrolling
	To Decrement Parameter Value
	To Reset The Relay Contact manually after Tripping
	Auto Or Manual Mode Selection

SPECIFICATION :	Volt Input	R, Y, B, Three Phase (10 VAC ~ 650 VAC)
INPUT	CT Input	50 Ampere CT (1.0 AMP ~ 50.0 AMP)
OUTPUT	Relay	1CO, 7 Amp., 230 VAC (NO - C - NC)
AUX. Accuracy	Operating Temp.	415 VAC, 50 Hz, ± 10%
Relative Humidity	Enclosure Material	± 1% of FSD 0°C ~ 55°C Up to 95% RH Non Condensing Polycarbonate + ABS Plastic

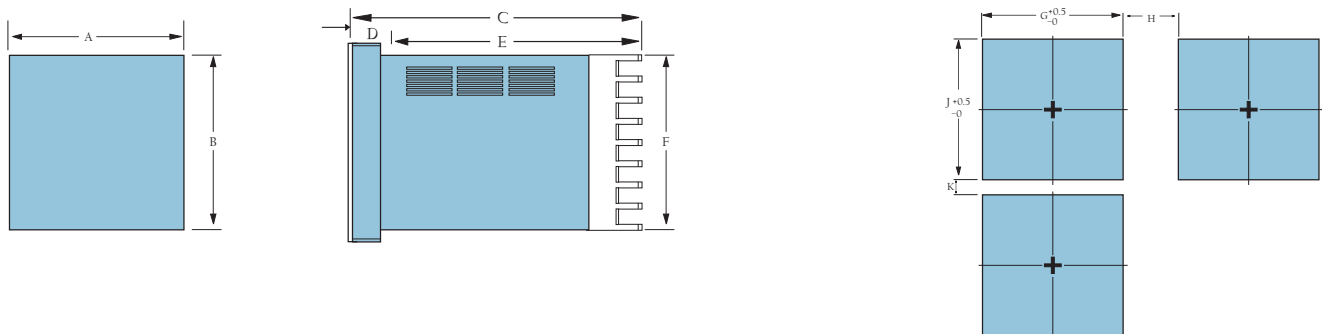
PRECAUTIONS WHEN WIRING

- Separate input leads and power lines in order to prevent external noise.
- Use specified size (M3.5, width 7.2 mm or less) crimped terminals for wiring. To connect bare wires to the terminal block, use copper braided or solid wires with a rated temperature of over 70°C and a gauge of AWG24 to AWG14 (equal to a cross-sectional area of 0.205 to 2.081 mm²). (The stripping length is 5 to 6 mm.) Up to two wires of same size and type, or two crimped terminals can be inserted into a single terminal.
- Use crimp terminals when wiring the terminals.
- Use the suitable wiring material and crimp tools for crimp terminals.
- Tighten the terminal screws to between 0.74 and 0.90 N-m.
- Use the following types of crimp terminals for M3.5 screws.



MOUNTING

The controller can be mounted on either a vertical or tilted panel using the mounting bracket supplied. Adequate access space must be available at the back of the panel for installation and servicing activities. Overall dimensions and panel cutout requirements for mounting the controller are shown in Figure



Size	A	B	C	D	E	F	G	H(Min)	J	K(Min)
(72*72)	72	72	88	3	85	65	68	25	68	25

Display Alphabet Characters

A _A	b _B	C _C	d _D	E _E	F _F	G _G	H _H	I _I	J _J	K _K	L _L	M _M	N _N	O _O	P _P	Q _Q	R _R	S _S	T _T	U _U	V _V	W _W	X _X	Y _Y	Z _Z
----------------	----------------	----------------	----------------	----------------	----------------	----------------	----------------	----------------	----------------	----------------	----------------	----------------	----------------	----------------	----------------	----------------	----------------	----------------	----------------	----------------	----------------	----------------	----------------	----------------	----------------

STARTING MENU

PRESS IF

CYC MODE (ENB)	CYT MODE (ENB)	DLF MODE (ENB)	DFT MODE (ENB)	NONE MODE
<p>415 Default Screen</p> <p>Press </p> <p>070 Over Load Ampere</p> <p>Use & </p> <p>Press </p> <p>000 Dry Run Ampere</p> <p>Use & </p> <p>Press </p> <p>000 Dry Reset Time</p> <p>Use & </p> <p>Press </p> <p>000 On Time (in Min)</p> <p>Use & </p> <p>Press </p> <p>000 Off Time (in Min)</p> <p>Use & </p> <p>Press </p> <p>000 Auto Time (in Sec.)</p> <p>Use & </p> <p>Press </p> <p>--- Save & Exit</p>	<p>415 Default Screen</p> <p>Press </p> <p>070 Over Load Ampere</p> <p>Use & </p> <p>Press </p> <p>000 Dry Run Ampere</p> <p>Use & </p> <p>Press </p> <p>000 Dry Reset Time</p> <p>Use & </p> <p>Press </p> <p>000 On Time (in Min.)</p> <p>Use & </p> <p>Press </p> <p>000 Off Time (in Min.)</p> <p>Use & </p> <p>Press </p> <p>000 Auto Time (in Sec.)</p> <p>Use & </p> <p>Press </p> <p>--- Save & Exit</p>	<p>415 Default Screen</p> <p>Press </p> <p>070 Over Load Ampere</p> <p>Use & </p> <p>Press </p> <p>000 Dry Run Ampere</p> <p>Use & </p> <p>Press </p> <p>000 Dry Reset Time</p> <p>Use & </p> <p>Press </p> <p>000 On Time (in Min.)</p> <p>Use & </p> <p>Press </p> <p>000 Auto Time (in Sec.)</p> <p>Use & </p> <p>Press </p> <p>--- Save & Exit</p>	<p>415 Default Screen</p> <p>Press </p> <p>070 Over Load Ampere</p> <p>Use & </p> <p>Press </p> <p>000 Dry Run Ampere</p> <p>Use & </p> <p>Press </p> <p>000 Dry Reset Time</p> <p>Use & </p> <p>Press </p> <p>000 On Time (in Min.)</p> <p>Use & </p> <p>Press </p> <p>000 Auto Time (in Sec.)</p> <p>Use & </p> <p>Press </p> <p>--- Save & Exit</p>	<p>415 Default Screen</p> <p>Press </p> <p>070 Over Load Ampere</p> <p>Use & </p> <p>Press </p> <p>000 Dry Run Ampere</p> <p>Use & </p> <p>Press </p> <p>000 Dry Reset Time</p> <p>Use & </p> <p>Press </p> <p>000 Auto Time (in Sec.)</p> <p>Use & </p> <p>Press </p> <p>--- Save & Exit</p>

Password	Cyclic Function With Trigger	Delay Time
Enable Function	Phase Sequence Function	Dry Reset Time
Auto Delay Time	Cyclic Function	Ampere Offset Value
None Mode	Function Disable	Difference Value
Mode Selection	Function Yes	R Phase Offset
Delay Off Time Fuction	High Voltage Function	Low Voltage Function
SPP Function (Phase Loss)	Limit For Ampere Setting	Y Phase Offset
Delay Off Time With	Start Delay Time (Initial Delay)	B Phase Offset

PARAMETER SETTING

PRESS For 5 Sec.

Time Parameter

043 Default Screen
Use &

Press

030 Enter Password
030 For Time
Parameter
Use &

Press

d15 « » Eno Auto Delay Time
Use &

Press

n0n » dLF » dFt Mode Selection
Use &

Press

n0 « » YES Memory Retain
Use &

Press

025 Percentage
Setting
Use &

Press

... Save & Exit

Ampere Parameter

043 Default Screen
Use &

Press

070 Enter Password
070 For Ampere
Parameter
Use &

Press

300 Max. Ampere
Limit Setting
Use &

Press

010 Start Delay
Time Setting
Use &

Press

005 Ampere Delay
Time Setting
Use &

Press

Enb « » d15 Dry Run
Function
Use &

Press

Enb « » d15 Dry Reset
Time Setting
Use &

Press

000 Ampere Offset
Value Setting
Use &

Press

... Save & Exit

Voltage Parameter

043 Default
Screen
Use &

Press

090 Enter Password
090 For Voltage
Parameter
Use &

Press

Enb « » d15 SPP Function
Use &

Press

Enb « » d15 Phase Sequence
Use &

Press

Enb « » d15 High Voltage
Use &

Press

490 High Voltage
Use &

Press

Enb « » d15 Low Voltage
Use &

Press

320 Low Voltage
Use &

Press

005 Voltage Delay
Time Setting
Use &

Press

050 Voltage Difference
For Phase Lose
Use &

Press

000 R Phase Offset
Value Setting
Use &

Press

000 Y Phase Offset
Value Setting
Use &

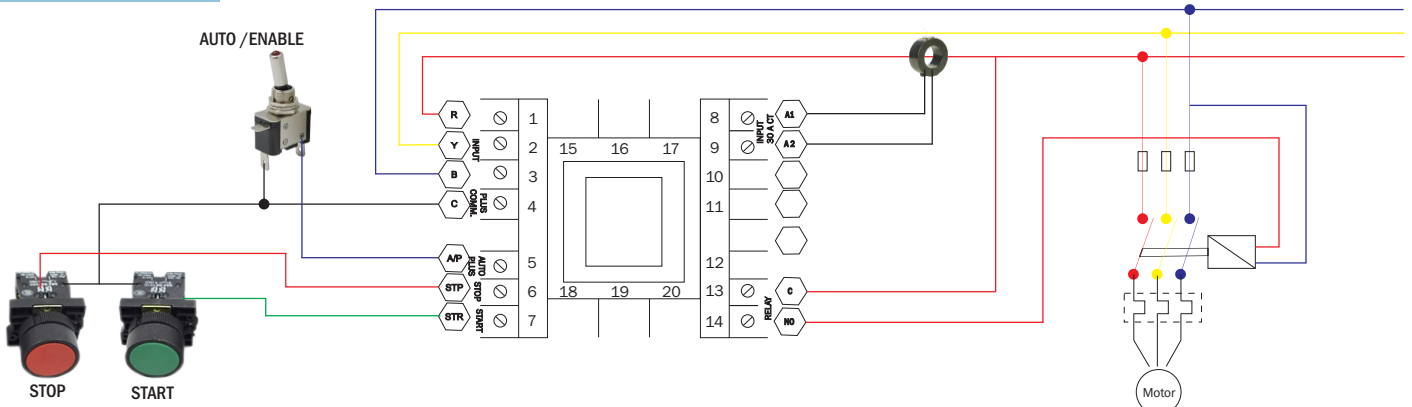
Press

000 B Phase Offset
Value Setting
Use &

Press

... Save & Exit

CONNECTION SCHEME



Warranty and Application Considerations

Read and Understand This Catalog

Please read and understand this catalog before purchasing the products. Please consult your venex representative if you have any questions or comments.

Warranty and Limitations of Liability

WARRANTY

(12 Months, unless agreed otherwise by us) We undertake to replace or repair at our option any defective product that needs replacement or repair, by reason of defective workmanship or defective materials, brought to our notice within the period specified below as "Warranty Period" after delivery to the buyer, providing also that it we so require, the part in respect of which a complaint is made must, before liability can be entertained under this clause, be sent at buyer's expense to our works or our office, as we may determine. Under no circumstances do we undertake liability for indirect or consequential loss or damage of any nature. This guarantee is given in lieu of and excludes every other condition or warranty whether statutory or otherwise.

LIMITATIONS OF LIABILITY

VAPL Shall Not Be Responsible For Special, Indirect, Or Consequential Damages, Loss Of Profits, Or Commercial Loss In Any Way Connected With The Products, Whether Such Claim Is Based On Contract, Warranty, Negligence, Or Strict Liability.
In no event shall the responsibility of VAPL for any act exceed the individual price of the product on which liability is asserted
In No Event Shall VAPL Be Responsible For Warranty, Repair, Or Other Claims Regarding The Products Unless VAPL's Analysis Confirms That The Products Were Properly Handled, Stored, Installed, And Maintained And Not Subject To Contamination, Abuse, Misuse, Or Inappropriate Modification Or Repair.

Application Considerations

SUITABILITY FOR USE

VAPL shall not be responsible for conformity with any standards, codes, or regulations that apply to the combination of products in the customer's application or use of the products. Take all necessary steps to determine the suitability of the product for the systems, machines, and equipment with which it will be used. Know and observe all prohibitions of use applicable to this product. Never Use The Products For An Application Involving Serious Risk To Life Or Property Without Ensuring That The System As A Whole Has Been Designed To Address The Risks, And That The VAPL Products Are Properly Rated And Installed For The Intended Use Within The Overall Equipment Or System.

DISCLAIMERS

PERFORMANCE DATA

Performance data given in this catalog is provided as a guide for the user in determining suitability and does not constitute a warranty. It may represent the result of VAPL's test conditions, and the users must correlate it to actual application requirements. Actual performance is subject to the VAPL Warranty and Limitations of Liability.

CHANGE IN SPECIFICATIONS

Product specifications and accessories may be changed at any time based on improvements and other reasons. Consult with your VAPL representative at any time to confirm actual specifications of purchased product.

DIMENSIONS AND WEIGHTS

Dimensions and weights are nominal and are not to be used for manufacturing purposes, even when tolerances are shown.

SAFETY PRECAUTIONS

Do not touch the terminals while power is being supplied. Doing so may occasionally result in minor injury due to electric shock.



Do not allow pieces of metal, wire clippings, or fine metallic shavings or filings from installation to enter the product. Doing so may occasionally result in electric shock, fire, or malfunction.



Do not use the product where subject to flammable or explosive gas. Otherwise, minor injury from explosion may occasionally occur.



Never disassemble, modify, or repair the product or touch any of the internal parts. Minor electric shock, fire, or malfunction may occasionally occur



If the output relays are used past their life expectancy, contact fusing or burning may occasionally occur. Always consider the application conditions and use the output relays within their rated load and electrical life expectancy. The life expectancy of output relays varies considerably with the output load and switching conditions



Tighten the terminal screws to between 0.74 and 0.90 N-m. Loose screws may occasionally result in fire.



Set the parameters of the product so that they are suitable for the system being controlled. If they are not suitable, unexpected operation may occasionally result in property damage or accidents.



A malfunction in the Temperature Controller may occasionally make control operations impossible or prevent alarm outputs, resulting in property damage. To maintain safety in the event of malfunction of the Temperature Controller, take appropriate safety measures, such as installing a monitoring device on a separate line.



PRECAUTIONS FOR SAFE USE

Be sure to observe the following precautions to prevent operation failure, malfunction, or adverse effects on the performance and functions of the product. Not doing so may occasionally result in unexpected events.

- The product is designed for indoor use only. Do not use the product outdoors or in any of the following locations.
 - Places directly subject to heat radiated from heating equipment.
 - Places subject to splashing liquid or oil atmosphere.
 - Places subject to direct sunlight.
 - Places subject to dust or corrosive gas (in particular, sulfide gas and ammonia gas).
 - Places subject to intense temperature change.
 - Places subject to icing and condensation.
 - Places subject to vibration and large shocks.
- Use/store within the rated temperature and humidity ranges. Provide forced-cooling if required.
- To allow heat to escape, do not block the area around the product. Do not block the ventilation holes on the product.
- Be sure to wire properly with correct polarity of terminals.
- Use specified size (M3.5, width 7.2 mm or less) crimped terminals for wiring. To connect bare wires to the terminal block, use copper braided or solid wires with a rated temperature of over 70 °C and gauge of AWG24 to AWG14 (equal to a cross-sectional area of 0.205 to 2.081 mm²). (The stripping length is 5 to 6 mm.) Up to two wires of same size and type, or two crimped terminals can be inserted into a single terminal.
- Do not wire the terminals which are not used.
- Allow as much space as possible between the controller and devices that generate a powerful high-frequency or surge. Separate the high-voltage or large-current power lines from other lines, and avoid parallel or common wiring with the power lines when you are wiring to the terminals.
- Use this product within the rated load and power supply.
- Make sure that the rated voltage is attained within two seconds of turning ON the power using a switch or relay contact. If the voltage is applied gradually, the power may not be reset or output malfunctions may occur into consideration when performing control.
- Make sure that the Controller has 30 minutes or more to warm up after turning ON the power before starting actual control operations to ensure the correct temperature display.
- A switch or circuit breaker should be provided close to this unit. The switch or circuit breaker should be within easy reach of the operator, and must be marked as a disconnecting means for this unit.
- Do not use paint thinner or similar chemical to clean with. Use standard grade alcohol.
- Design system (control panel, etc) considering the 2 seconds of delay that the controller's output to be set after power ON.
- The output may turn OFF when shifting to certain levels. Take this into consideration when performing control.
- The number of non-volatile memory write operations is limited

VBTRON AUTOMATION PVT. LTD.

132, Vishala industrial Estate,
Nr. Odhav Ring Road Circle,
Kathwada, Ahmedabad.
(GUJARAT) INDIA

Authorized Distributor :

© VBTRON AUTOMATION PVT. LTD. 2014
All Right Reserved. In the interest of
product improvement, specifications are
subject to change without notice.