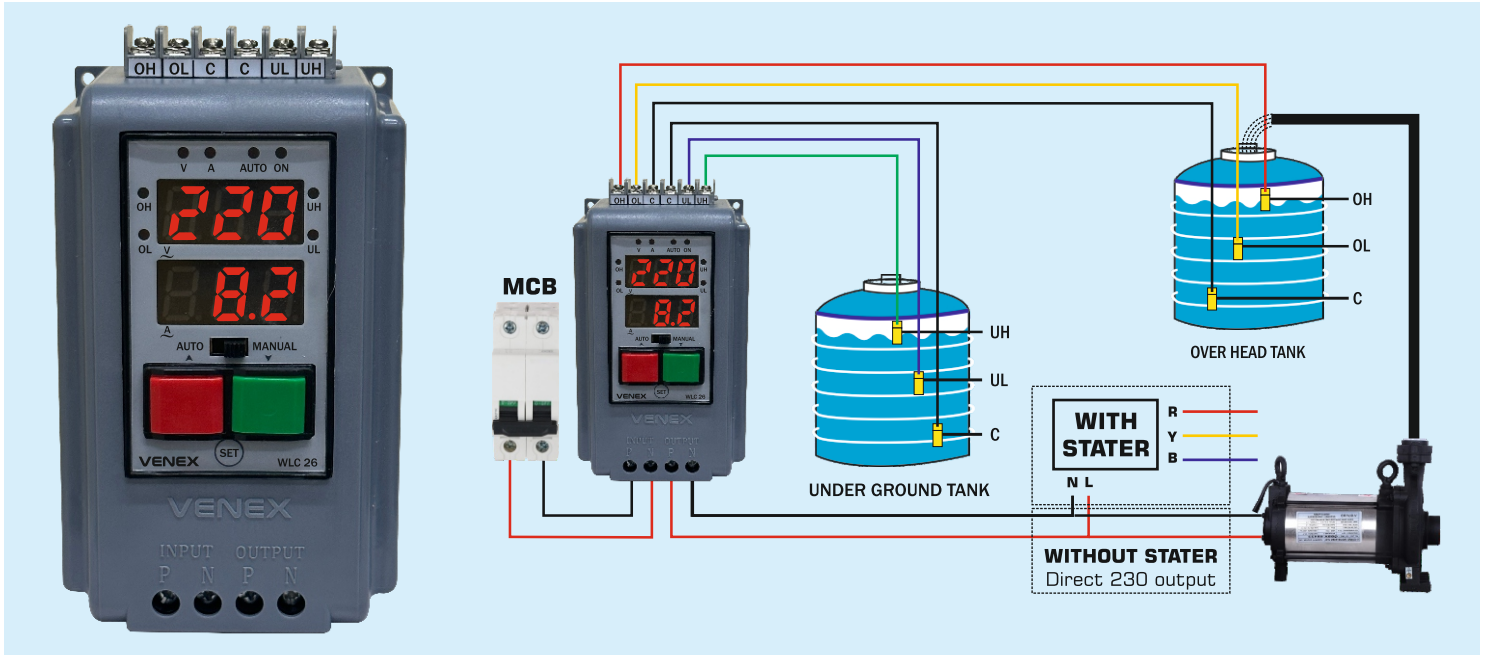


This section gives you all the information necessary to help you monitor and operate your controller including an Operator Interface overview, an explanation of the Displays, keys, LEDs, Mode access, and Operation Modes.



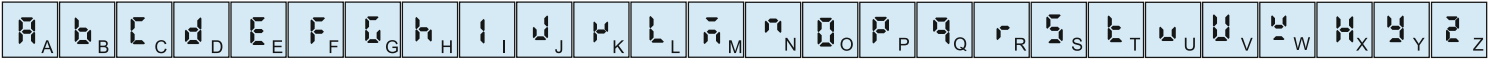
KEY OPERATION:

Keys	Functions
	To View & Edit Parameter And to be set Value And Move To The next Step.
	To Increment Parameter Value + STOP.
	To Decrement Parameter Value + START.
	Auto Or Manual Mode Selection.

SPECIFICATION

Technology	Micro Controller Based Software Technology
Current Range / HP	1 to 18 Ampere/ 0.5 HP to 2.0 HP or As Required
Display	0.56 Seven Segment (3+3 Digit Double Display) Fault Indication On Display
Protection	Electronic Over Load (Settable) Current Based Dry Run (Settable) High & Low Voltage Settable
Timer	Power On Delay Timer Delay Off Timer, Cyclic On - Off Timer (Range - 999 Minute) Dry Run Auto Reset Timer (Range - 999 Minute)
Water Level	Two Tank Fully Automatic Water Level Controller Float Switch Connection Facility Available Tank Level Indication

Display Alphabet Characters



PARAMETER SETTING

PRESS For 5 Sec.

Time Parameter

Ampere Parameter

Voltage Parameter

043 Default Screen
Use &

Press

030 Enter Password
030 For Time Parameter
Use &

Press

d15 **Enb**
Auto Time Enable/Disable Selection
Use &

Press

n0n **d1f** **d1e** **040**
Time Mode Selection

Press

n0 **yes**
Memory (Power Fail Memory Yes/ No Selection)
Use &

Press

025 (Auto Over Load & Dry Run Setting Percentage)
Use &

Press

- - -
Save & Exit

043 Default Screen
Use &

Press

070 Enter Password
070 For Ampere Parameter
Use &

Press

250 Max. Ampere Limit Setting
Use &

Press

010 Start Delay Time Setting
Use &

Press

005 Ampere Delay Time Setting
Use &

Press

Enb **d15**
Dry Run Function Enable/Disable Selection
Use &

Press

000 Ampere Offset Value Setting
Use &

Press

005 **r-2**
Cyclic Trigger Timer Mode

Press

- - -
Save & Exit

043 Default Screen
Use &

Press

090 Enter Password
090 For Voltage Parameter
Use &

Press

Enb **d15**
SPP Function Enable/Disable Selection
Use &

Press

280 High Voltage
Use &

Press

Enb **d15**
Low Voltage Enable/Disable Selection
Use &

Press

160 Low Voltage
Use &

Press

005 Voltage Delay Time Setting
Use &

Press

000 Voltage Offset Value Setting
Use &

Press

- - -
Save & Exit

PA5 Password	04e Cyclic Trigger Timer Mode	OL Over Load
Lte Limit For Ampere Setting	040 Cyclic Timer With Water Level Mode	OLt Over Load Tripling Time (Second)
n0n None Mode	PEr Percentage	UAc Under Current
n0d Mode Selection	5td Start Delay Time (Initial Delay)	AOV Ampere Offset Value
d1f Delay Off Time Mode	d15 Function Disable	UVU Under Voltage
040 Cyclic Timer Mode	Enb Enable Function	d1y Delay Time